



Cheadle Hulme Primary School Induction Evening

www.cheadlehulmeprimary.org.uk

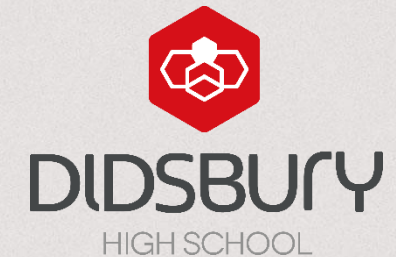


LAURUS

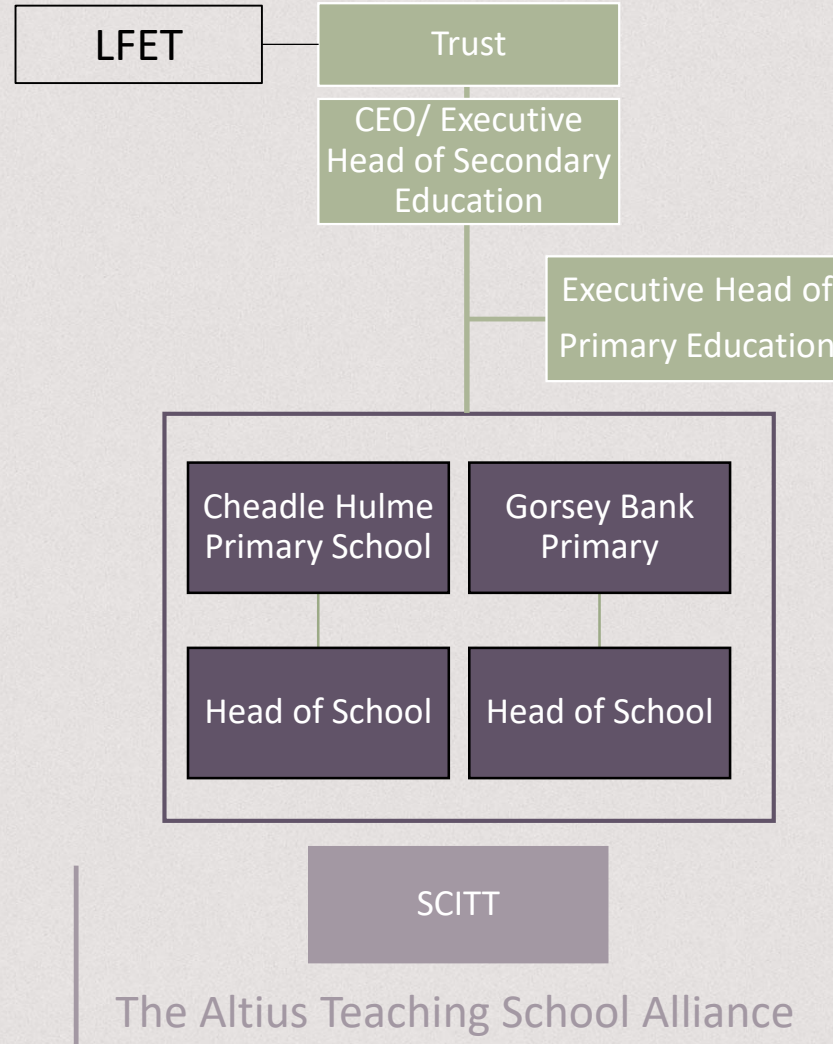
TRUST



laurustrust.co.uk







The Foundation Stage Team

- **Mrs Calthorpe (Class Teacher)**
- **Mrs Allaby (Class Teacher)**
- **Mrs Smith (Teaching Assistant)**
- **Mrs Swindells (Teaching Assistant)**

**Safe and happy children and a
safe and happy environment is
conducive to successful
learning**



Our School Day

8.50 am	School Opens
9.00 am	Morning Registration
12.00 noon	Lunch
1.00 pm	Afternoon Registration
3.15 pm	Home Time

There's much more to it than that of course...

- Assemblies
- Playtimes
- Learning outside the classroom
- Learning something new
- Making friends
- Prepare for anything!

Learning and Development

- Assessment for Learning
- Tapestry
- An Enabling Environment
- A mixture of direct teaching and child-initiated learning
- A balance of recorded work and experiences

The EYFS Framework

- Playing and exploring
- Interest led learning
- Observations and next steps

The Seven Areas of Learning and Development

- **Three prime areas:**

- Communication and Language
- Physical Development
- Personal, Social and Emotional Development

- **Four specific areas**

- Literacy
- Mathematics
- Understanding the World
- Expressive Arts and Design

Curriculum Evening

Tuesday 9th October 2018

6.00 - 7.00pm

- An opportunity to learn more about the teaching and learning in our Reception classes.
- How we work in partnership to support our children's learning.

Houses

 Magnus	Magnus is Latin for the qualities of 'great', 'mighty' or 'powerful'	 Citius	Citius is Latin for the Olympic quality 'faster' or 'swifter'
 Fortius	Fortius is Latin for the Olympic quality 'stronger'	 Altius	Altius is Latin for the Olympic quality 'higher'

What do the children need to bring to school everyday?

- Book bag
- Reading record book
- PE kit (leave in school)
- A pair of wellies (leave in school)
- Coat
- Water bottle
- Seasonal – hat, sun cream

Medicine

- We can only give medicine prescribed by your child's doctor - no Calpol
- Asthma and allergies – we must be informed and have the correct (and prescribed) remedies/medicines in school
- Medical forms must be completed
- Please hand medicines to a member of staff
- We are a nut free school

Special Shoe Boxes

- Bring along in the first week of school in September.
- Fill it with some special things you would like to share.
- Photos of family members and people who are special to them (not too many!)
- Decorate your box

What do you need to practise before September?

- Independently using the toilet
- Use of knife and fork
- Fastening own coat and shoes
- Dressing/undressing
- Get into reading!

Communication and working together:

- www.cheadlehulmeprimary.org.uk
- Twitter
- Tapestry
- Parentpay
- PTA and Parent Council Reps
- Contacting teachers:
 - Reading Records
 - Letters/notes
 - Make an appointment

Tuesday 10th July 2017

- Morning session : 9.30 am – 11.30am
 - Tea and Coffee from 11.00am
- Afternoon session : 12.30pm – 2.30pm
 - Tea and Coffee from 2.00pm
- Pre- school visits during June & July



Transition Week

Monday 10 th September	8.50am – 12.00 noon
Tuesday 11 th September	8.50am – 12.00 noon
Wednesday 12 th September	8.50am – 12.00 noon
Thursday 13 th September	8.50am – 1.15pm
Friday 14 th September	8.50am – 1.15pm



Kids Club

Monday to Friday 7.30am – 8.50am

Monday to Thursday 3.15pm – 6.30pm

Friday 3.15pm – 6.00pm

Kids Club will start on Monday 17th September 2018